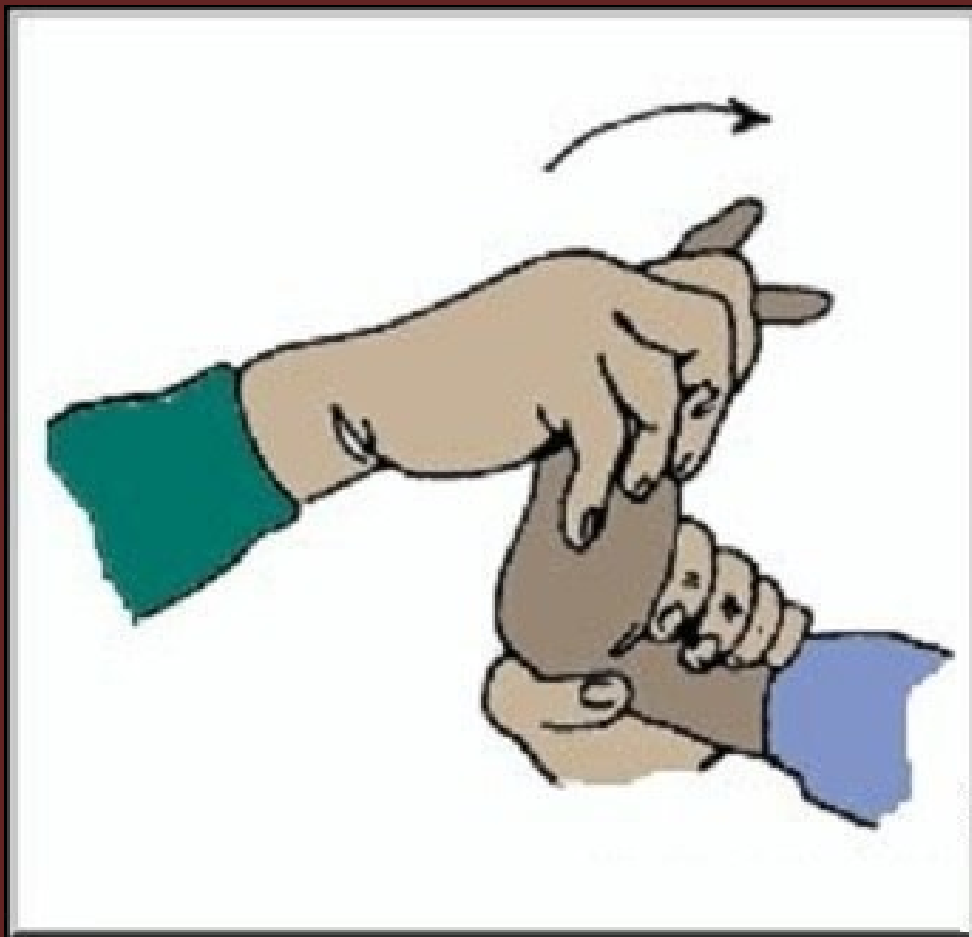


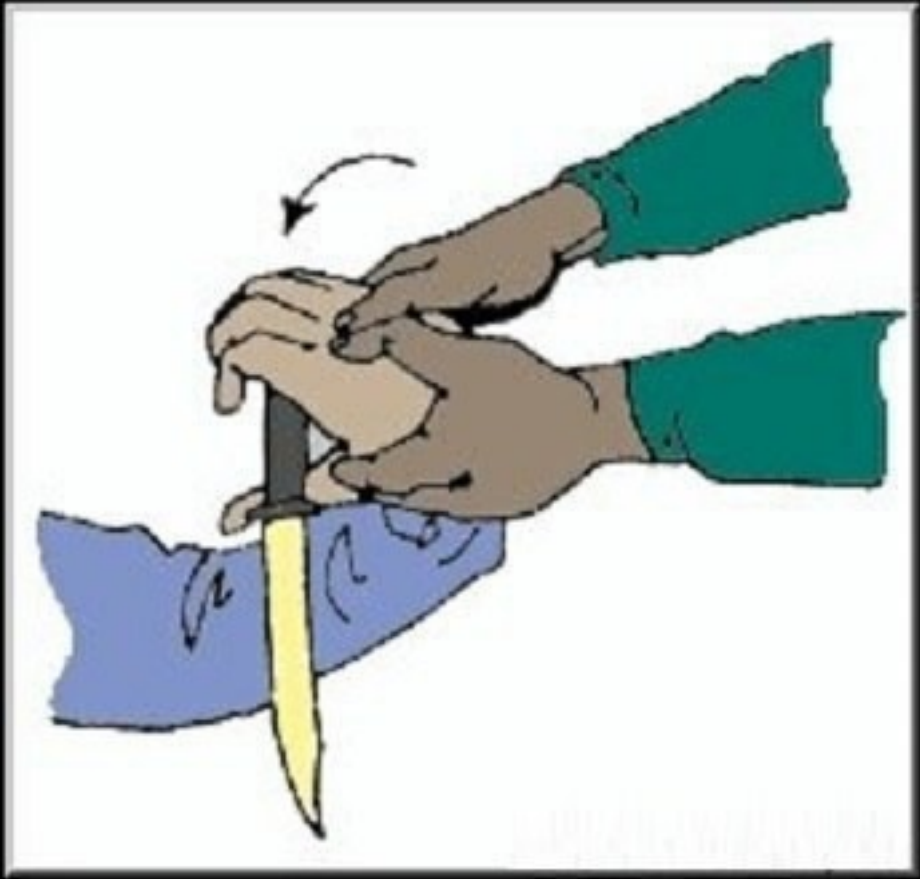
Secret Intelligence Service

Section : Mental and Physical

Painful Holds

The following is self explanatory

















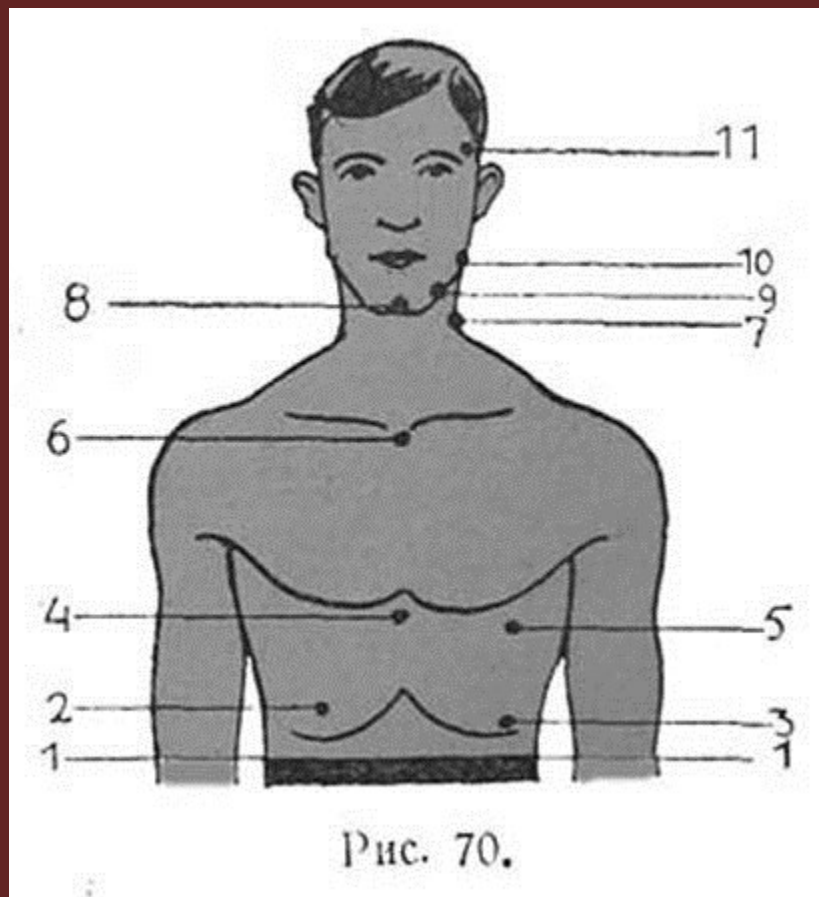


(II) Targets on the Body

Easiest achieved knockout punch chin (Fig. 70, 8, and 9) and the angle of the jaw. These strikes usually result in a complete loss of consciousness, which occurs because the blood vessels that feed the brain for a moment cease to exist. Assailant wakes up after a few seconds. Knockout on the jaw and chin are of no consequence and does not cause unpleasant sensations.

Deafening by blows to the temple and the carotid artery (Fig. 70, 7).
In these cases, a person can usually get up after 8-10 seconds, but
the further conduct of the fray very difficult.

Hit under the left edge of the last rib (Fig. 70, 3) Similarly acts.
Hitting the aorta above the heart (Fig. 70, 6) sometimes leads to the
fact that the person falls to the ground without being able to climb.
The same effect is repeated by blows to the left side of the chest
under the heart (Fig. 70, 5). It is very painful blow to the liver
(Fig. 70, 2)



Section : Mental and Physical (C-I)

Adversitate. Custodi. Per Verum